

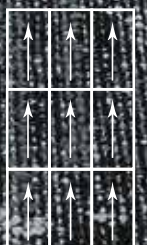
06219

GLOBE

Tandus



**R** Globe21904 Alps  
Monolithic Installation



06219

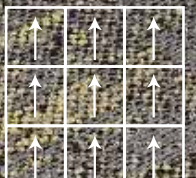
GLOBE

Tandus



S  
50

Globe 21901 Yellowstone  
Globe 21905 Tennessee  
Monolithic Installation



06219

Rooted in ancient map-making techniques with structured amorphous patterning, Globe imparts a classic timelessness. Designed to “personalize” the workplace with bright color accents for floor plane mapping and workplace seating.

Globe provides a fresh take on Organics for interiors with a textural surface of multiple piles. Matte and lustrous fiber add depth while warm and cool neutrals ground this product.

Tandus



21901 Yellowstone



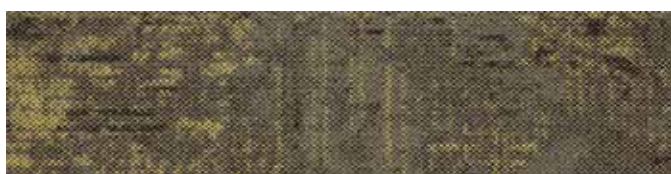
21902 Himalayas



21903 Skandinavia



21904 Alps



21905 Tennessee



21906 Ethiopia



21907 Baltic



21908 Bering Strait



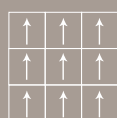
21909 Apennine



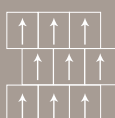
21910 Balkan

06219

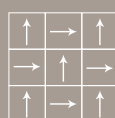
## Installation Instructions:



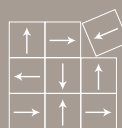
Monolithic



Horizontal Ashlar



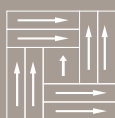
Quarter Turn



Random



Herringbone




Gingham



Ashlar

Tandus

## PRODUCT INFORMATION

Product Size	<div><div>S</div><div></div><div>L</div><div>XL</div><div>T</div><div>R</div></div>	500 mm x 500 mm (19.7" x 19.7")	500 mm x 1000 mm (19.7" x 39.4")
		667 mm x 667 mm (26.25" x 26.25")	250 mm x 1000 mm (9.84" x 39.4")
		1000 mm x 1000 mm (39.4" x 39.4")	
Construction	Patterned Loop		
Gauge	1/13(50.4rows/10 cm)		
Fiber System	100% Solution Dyed Nylon		
Density Factor	7643 oz/yd <sup>3</sup> UM44D		
Dye Method	Solution Dyed		
Total Product Weight	3878 g/m <sup>2</sup> ± 5%		
Pile Height Average	4.0 mm ASTM D-418		
Soil Resistance	ENSURE		
Indoor Air Quality	All Tandus products comply with CRI Green Label Plus Standards ID: #GLP5288. Passes GB 18587-2001		
Backing	ECOBOND™ Recycled Content Backing TANDUS ECOPLY™ Backing		
Recycled Content	ECOBOND™ contains a minimum of 30% overall recycled content		
Surface Flammability	Passes CPSC FF 1-70 ASTM D-2859		
Flooring Radiant Panel	Class I (Mean average CRF: 0.45 watts/cm <sup>2</sup> or higher)		ASTM E-648
Electrostatic Propensity	3.0 kV or lower AATCC 134		
Colourfastness to Light	≥4 after 100 hours AATCC 16E		
Recycling:	All Tandus Flooring Asia products, when recovered, are 100% recyclable		



## PRODUCT NOTES:

1. Product specifications are derived from averages resulting from normal manufacturing tolerances in yarn, fiber, temperature, humidity and colour. Product specifications may vary within normal industry and standardised testing tolerances.
2. These specifications reflect mean averages based upon tests of production runs of this carpet style by independent laboratories. A range of variances is implicit in the testing process. Furthermore, the standard test methods established to derive the specifications lack a degree of precision and repeatability; therefore, individual test results on the actual carpet purchased may differ from the specifications above.
3. Colours may vary slightly from dye lot to dye lot.
4. Backing or other materials may be changed without prior notice when shortages occur or when technological advancements become available which provide for improvement of the product's performance.
5. All products are 100% recyclable.

## WARRANTY

Limited 15 years non-prorated surface wear, static, delamination, edge ravel, zippering and backing resiliency loss. See warranty for details.  
Contact the Tandus Representative nearest you for detailed specifications, limited warranty and sample requests.